



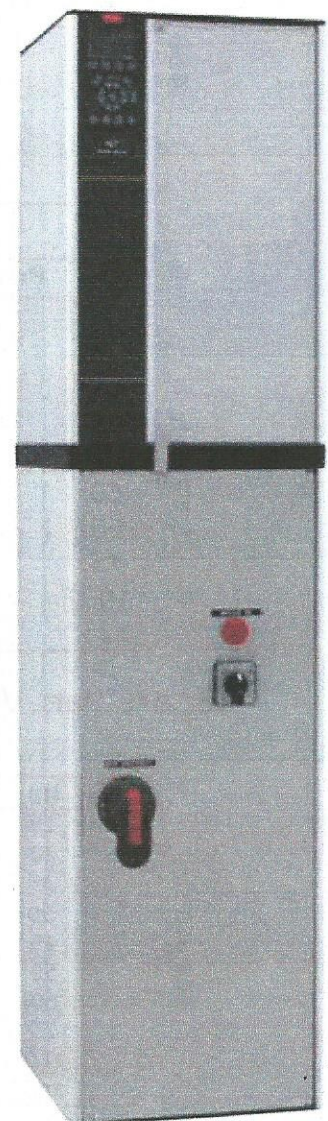
Danfoss Packaged Drive Solutions Vertical Bypass Panel Assemblies

This panel is:

- Structured around our FC-102 VLT HVAC Drive.
- Sleek vertical layout that requires less horizontal wall space.
- UL/CUL 508 listed
- UL Type 1 / Nema 1 design.
- 3 contactor bypass.
- Inherent phase loss/imbalance and brown-out protection to prevent product damage and downtime in adverse power quality installations.

Quick Ship Same Day Features:

- 230V thru 60 HP.
460V thru 125HP.
600V thru 125HP.
- Keypad mounted on Door
- Mains-Fused Disconnect
- Electromechanical Bypass
- Fieldbus options ordered separate
- I/O Expansion options ordered separate



Danfoss VLT Drives

8800 W. Bradley Road
Milwaukee, WI 53224, USA

24/7 Phone: 1.888.326.3677
1.414.355.8800
FAX: 1.414.355.6117

